

# Straphangers Campaign

## R SUBWAY LINE PROFILE



**Straphangers Campaign MetroCard Rating \$1.75**

The R line ranks tied for 11th best of the 20 subway lines rated by the Straphangers Campaign. Our ranking is based on the MTA New York City Transit data below, using a method described at [www.straphangers.org](http://www.straphangers.org).

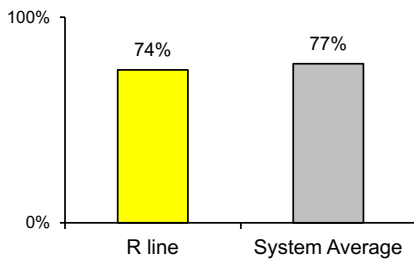
### The R line is scheduled to come less often than most subway lines...

scheduled minutes between weekday trains  
as of December 2015

	AM Rush	Noon	PM Rush	Overnight
<b>R line</b>	<b>6:30</b>	<b>10</b>	<b>7</b>	<b>20</b>
<b>System Average</b>	<b>5:35</b>	<b>8:21</b>	<b>6:05</b>	<b>20</b>

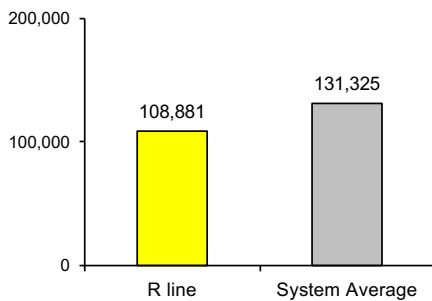
### and arrives with below-average regularity.

% of trains arriving at regular intervals  
--weekday "wait assessment"--  
between 6 am and midnight



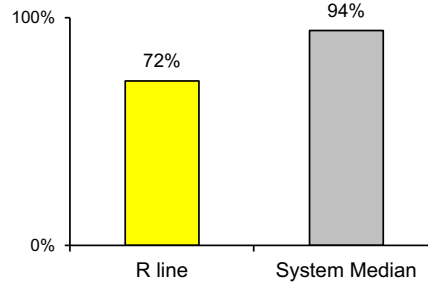
### Cars on the R break down more often than those on other subway lines.

miles traveled between delays caused by  
mechanical failures, 2015



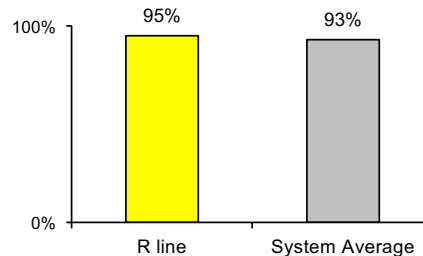
### The R is the system's least crowded line.

% of maximum passenger guideline  
at AM rush peak load point



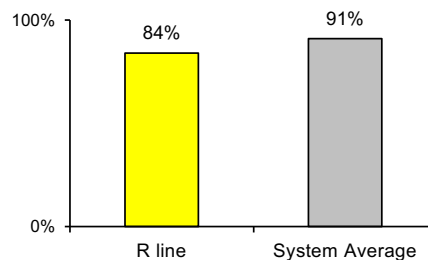
### The R line is cleaner than average...

% of cars with 'light or no interior dirtiness' as  
defined by NYC Transit



### but performs below average on in-car announcements.

% of cars with correct announcements as  
defined by NYC Transit



Questions about your line? Suggestions? Complaints? -- Call 511