

Straphangers Campaign

Q SUBWAY LINE PROFILE



Straphangers Campaign MetroCard Rating \$1.80

The Q line ranks tied for 7th best of the 20 subway lines rated by the Straphangers Campaign. Our ranking is based on the MTA New York City Transit data below, using a method described at www.straphangers.org.

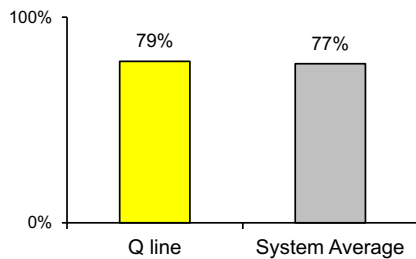
The Q line is scheduled to come less often than most subway lines...

scheduled minutes between weekday trains
as of December 2015

	AM Rush	Noon	PM Rush	Overnight
Q line	7:15	10	8	20
System Average	5:35	8:21	6:05	20

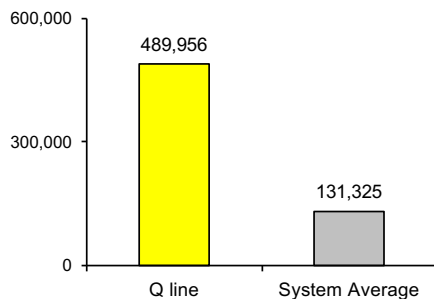
but arrives with above-average regularity.

% of trains arriving at regular intervals
--weekday "wait assessment"--
between 6 am and midnight



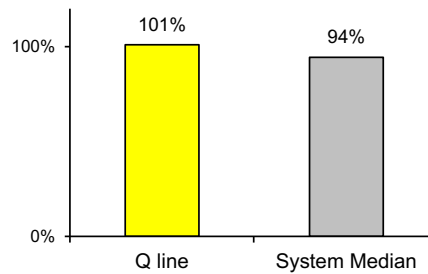
Cars on the Q break down less often than those on all other lines in the system.

miles traveled between delays caused by
mechanical failures, 2015



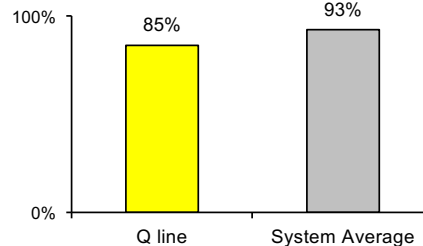
The Q is crowded.

% of maximum passenger guideline
at AM rush peak load point



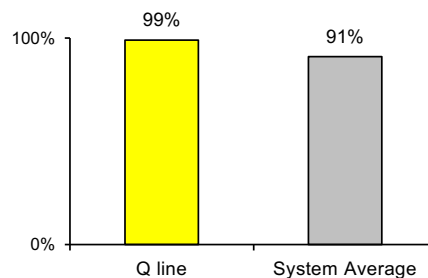
The Q is the system's least clean line...

% of cars with 'light or no interior dirtiness' as
defined by NYC Transit



but it performs nearly perfect on in-car announcements.

% of cars with correct announcements as
defined by NYC Transit



Questions about your line? Suggestions? Complaints? -- Call 511