

Straphangers Campaign

N SUBWAY LINE PROFILE



Straphangers Campaign MetroCard Rating \$1.80

The N line ranks tied for 7th best of the 20 subway lines rated by the Straphangers Campaign. Our ranking is based on the MTA New York City Transit data below, using a method described at www.straphangers.org.

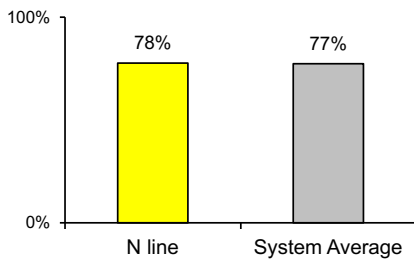
The N line is scheduled to come less often than most subway lines...

scheduled minutes between weekday trains
as of December 2015

	AM Rush	Noon	PM Rush	Overnight
N line	7:30	10	7:45	20
System Average	5:35	8:21	6:05	20

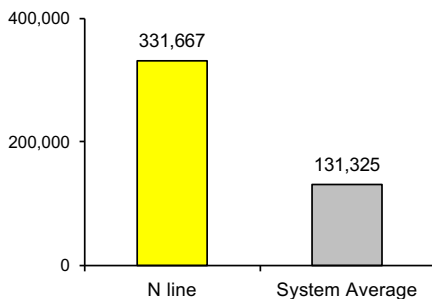
but arrives with about-average regularity.

% of trains arriving at regular intervals
--weekday "wait assessment"--
between 6 am and midnight



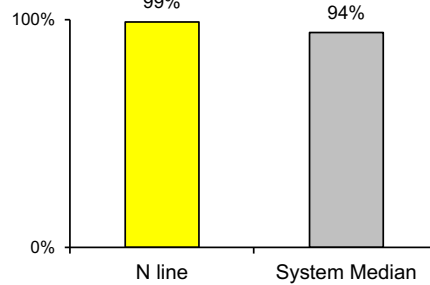
Cars on the N break down much less often than those on other subway lines.

miles traveled between delays caused by
mechanical failures, 2015



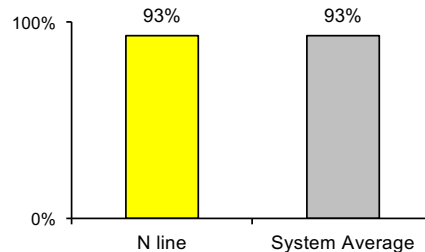
The N is more crowded than most lines.

% of maximum passenger guideline
at AM rush peak load point



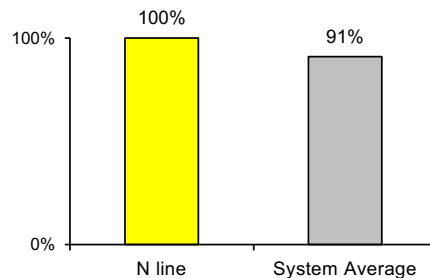
The N line is as clean as average...

% of cars with 'light or no interior dirtiness' as
defined by NYC Transit



and performs perfectly on in-car announcements.

% of cars with correct announcements as
defined by NYC Transit



Questions about your line? Suggestions? Complaints? -- Call 511