

Straphangers Campaign

L SUBWAY LINE PROFILE



Straphangers Campaign
MetroCard Rating **\$2.05**

The L line ranks tied for best of the 20 subway lines rated by the Straphangers Campaign. Our ranking is based on the MTA New York City Transit data below, using a method described at www.straphangers.org.

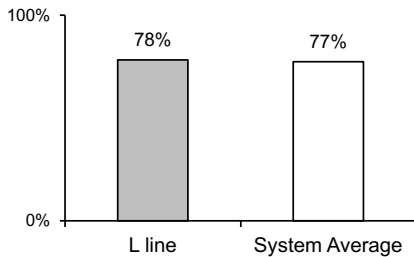
The L line is scheduled to come more often than most subway lines...

scheduled minutes between weekday trains
as of December 2015

	AM Rush	Noon	PM Rush	Overnight
L line	3	5	4	20
System Average	5:35	8:21	6:05	20

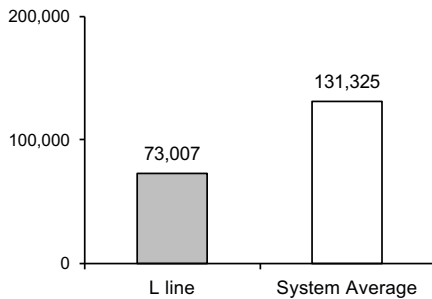
and arrives with near-average regularity.

% of trains arriving at regular intervals
--weekday "wait assessment"--
between 6 am and midnight



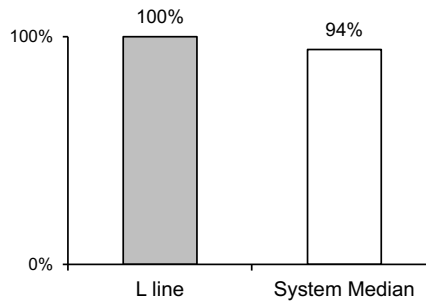
Cars on the L break down much more often than those on other subway lines.

miles traveled between delays caused by
mechanical failures, 2015



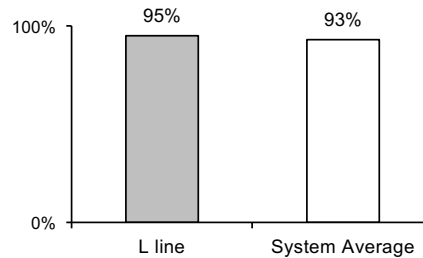
The L is crowded.

% of maximum passenger guideline
at AM rush peak load point



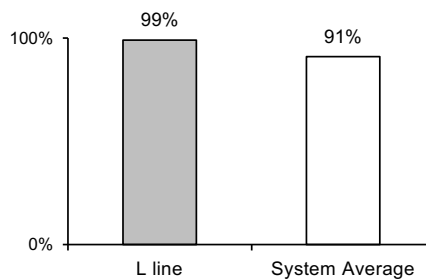
The L line is cleaner than average...

% of cars with 'light or no interior dirtiness' as
defined by NYC Transit



and performs nearly perfect on in-car announcements.

% of cars with correct announcements as
defined by NYC Transit



Questions about your line? Suggestions? Complaints? -- Call 511