

Straphangers Campaign

J/Z SUBWAY LINE PROFILE



The J/Z lines rank 6th best of the 20 subway lines rated by the Straphangers Campaign. Our ranking is based on the MTA New York City Transit data below, using a method described at www.straphangers.org.

Straphangers Campaign MetroCard Rating \$1.85

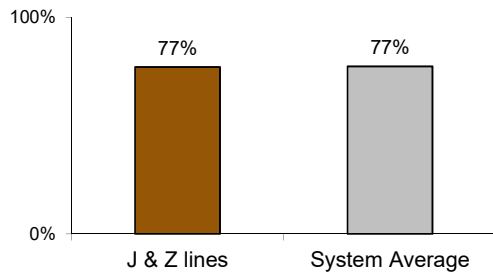
The J line has more rush hour but less midday service than the average line.

scheduled minutes between weekday trains as of December 2015

	AM Rush	Noon	PM Rush	Overnight
J line	5	10	5	20
System Average	5:35	8:21	6:05	20

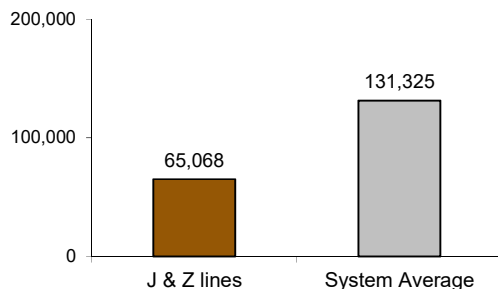
The J & Z arrive with average regularity...

% of trains arriving at regular intervals --weekday "wait assessment"-- between 6 am and midnight



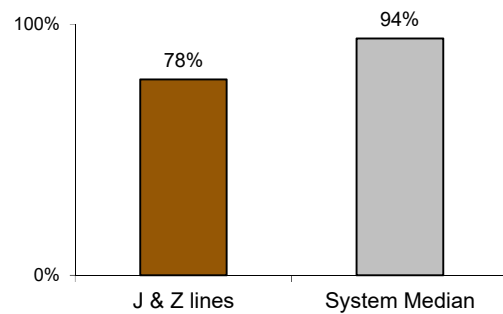
but their cars break down much more often than those on the average line.

miles traveled between delays caused by mechanical failures, 2015



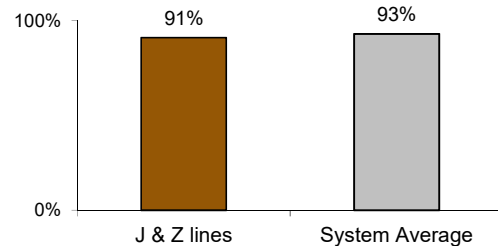
The J & Z are less crowded.

% of maximum passenger guideline at AM rush peak load point



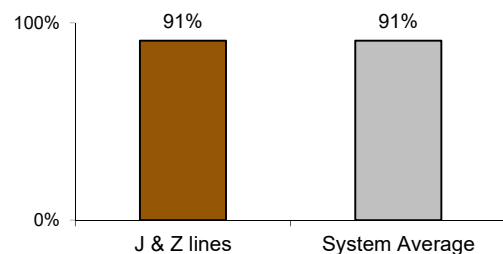
The J & Z are less clean than average...

% of cars with 'light or no interior dirtiness' as defined by NYC Transit



but perform average on in-car announcements.

% of cars with correct announcements as defined by NYC Transit



Questions about your line? Suggestions? Complaints? -- Call 511