

# Straphangers Campaign

## G SUBWAY LINE PROFILE



**Straphangers Campaign MetroCard Rating \$1.80**

The G line ranks tied for 7th best of the 20 subway lines rated by the Straphangers Campaign. Our ranking is based on the MTA New York City Transit data below, using a method described at [www.straphangers.org](http://www.straphangers.org).

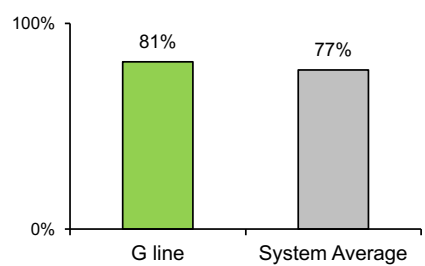
### The G line is scheduled to come less often than most subway lines...

scheduled minutes between weekday trains as of December 2015

	AM Rush	Noon	PM Rush	Overnight
<b>G line</b>	<b>7</b>	<b>10</b>	<b>8</b>	<b>20</b>
<b>System Average</b>	<b>5:35</b>	<b>8:21</b>	<b>6:05</b>	<b>20</b>

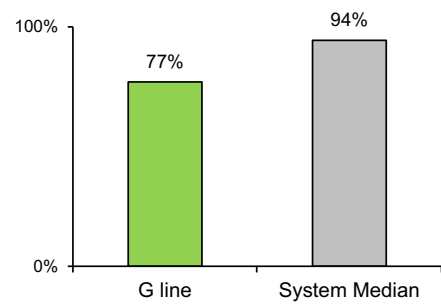
### but arrives with regularity more often than any other line in the system.

% of trains arriving at regular intervals --weekday "wait assessment"-- between 6 am and midnight



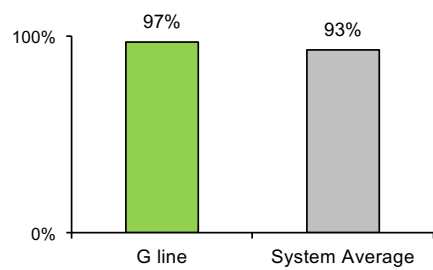
### The G is less crowded than most lines.

% of maximum passenger guideline at AM rush peak load point



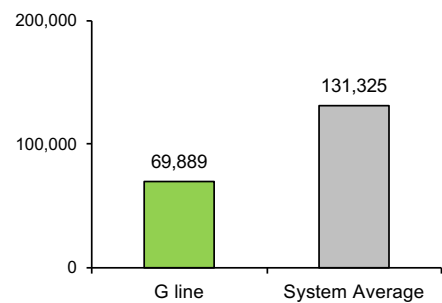
### The G is cleaner than average...

% of cars with 'light or no interior dirtiness' as defined by NYC Transit



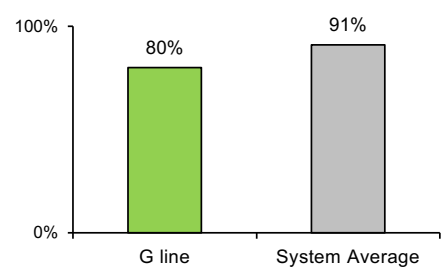
### Cars on the G break down much more often than those on other subway lines.

miles traveled between delays caused by mechanical failures, 2015



### but performs below average on in-car announcements.

% of cars with correct announcements as defined by NYC Transit



Questions about your line? Suggestions? Complaints? -- Call 511