

# Straphangers Campaign

## B SUBWAY LINE PROFILE



**Straphangers Campaign MetroCard Rating \$1.65**

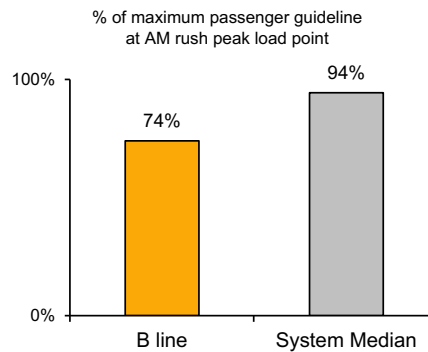
The B line ranks tied for 14th best of the 20 subway lines rated by the Straphangers Campaign. Our ranking is based on the MTA New York City Transit data below, using a method described at [www.straphangers.org](http://www.straphangers.org).

### The B line has a below-average amount of daytime service, and doesn't run at night.

scheduled minutes between weekday trains  
as of December 2015

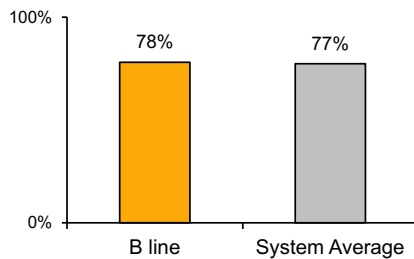
	AM Rush	Noon	PM Rush	Overnight
<b>B line</b>	<b>7:30</b>	<b>10</b>	<b>8:15</b>	<b>-</b>
<b>System Average</b>	<b>5:35</b>	<b>8:21</b>	<b>6:05</b>	<b>20</b>

### The B is much less crowded than most lines.



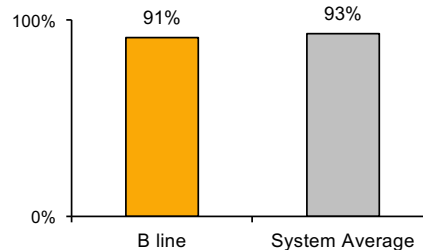
### The B arrives with near-average regularity...

% of trains arriving at regular intervals  
--weekday "wait assessment"--  
between 6 am and midnight



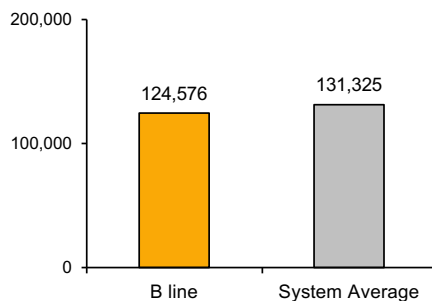
### The B is less clean than average...

% of cars with 'light or no interior dirtiness' as  
defined by NYC Transit



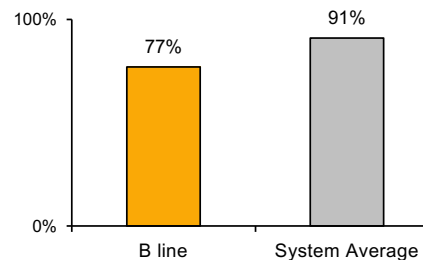
### but its cars break down more often than those on the average line.

miles traveled between delays caused by  
mechanical failures, 2015



### and it performs worst on in-car announcements.

% of cars with correct announcements as  
defined by NYC Transit



**Questions about your line? Suggestions? Complaints? -- Call 511**