

# Straphangers Campaign

## A SUBWAY LINE PROFILE



**Straphangers Campaign MetroCard Rating \$1.50**

The A line ranks tied for worst of the 20 subway lines rated by the Straphangers Campaign. Our ranking is based on the MTA New York City Transit data below, using a method described at [www.straphangers.org](http://www.straphangers.org).

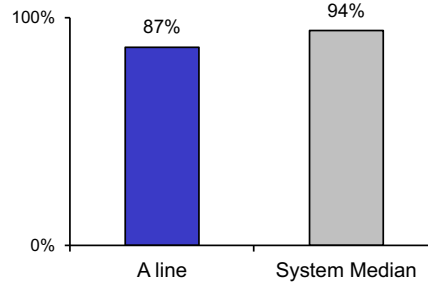
### The A has more rush hour but less midday service than the average subway line.

scheduled minutes between weekday trains  
as of December 2015

	AM Rush	Noon	PM Rush	Overnight
<b>A line</b>	<b>5:30</b>	<b>10</b>	<b>5:30</b>	<b>20</b>
<b>System Average</b>	<b>5:35</b>	<b>8:21</b>	<b>6:05</b>	<b>20</b>

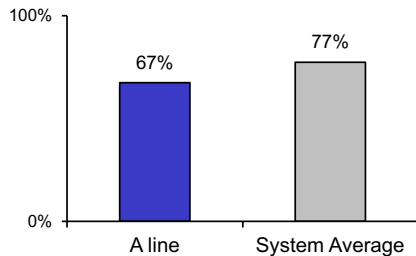
### The A is less crowded than most lines.

% of maximum passenger guideline  
at AM rush peak load point



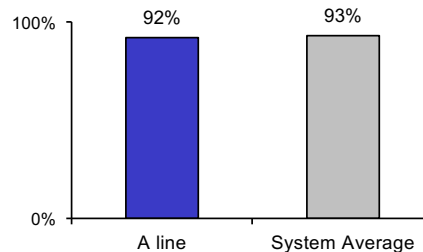
### The A arrives with regularity much less often than the system average...

% of trains arriving at regular intervals  
--weekday "wait assessment"--  
between 6 am and midnight



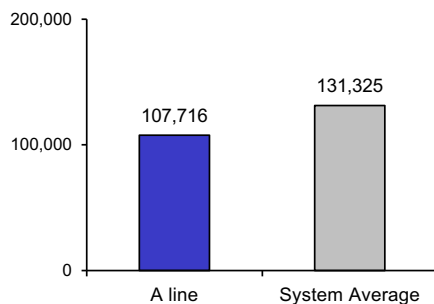
### The A is about as clean as average...

% of cars with 'light or no interior dirtiness' as  
defined by NYC Transit



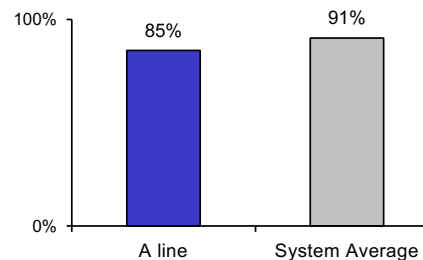
### and its cars break down more often than those on the average line.

miles traveled between delays caused by  
mechanical failures, 2015



### but performs below average on in-car announcements.

% of cars with correct announcements as  
defined by NYC Transit



**Questions about your line? Suggestions? Complaints? -- Call 511**