

# Straphangers Campaign

## 7 SUBWAY LINE PROFILE



**Straphangers Campaign MetroCard Rating \$2.05**

The 7 line ranks tied for best of the 20 subway lines rated by the Straphangers Campaign. Our ranking is based on the MTA New York City Transit data below, using a method described at [www.straphangers.org](http://www.straphangers.org).

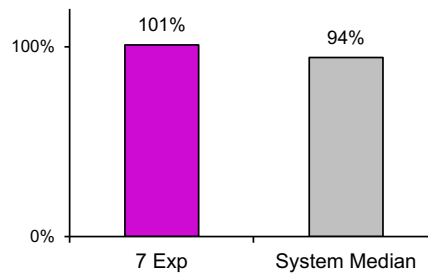
### The 7 is tied for the highest amount of scheduled service.

scheduled minutes between weekday trains  
as of December 2015

	AM Rush	Noon	PM Rush	Overnight
<b>7 line</b>	<b>2:30</b>	<b>5</b>	<b>2:30</b>	<b>20</b>
<b>System Average</b>	<b>5:35</b>	<b>8:21</b>	<b>6:05</b>	<b>20</b>

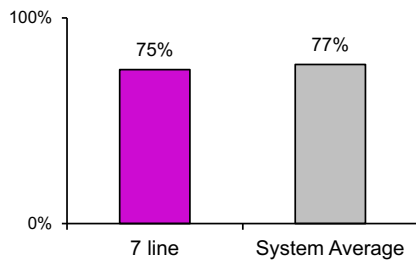
### The 7 is a crowded line.

% of maximum passenger guideline  
at AM rush peak load point



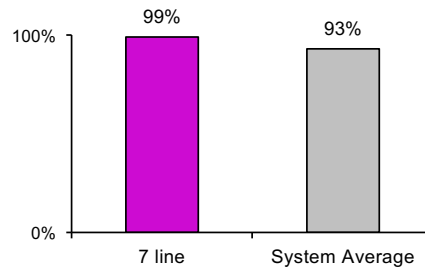
### The 7 line arrives with below-average regularity...

% of trains arriving at regular intervals  
--weekday "wait assessment"--  
between 6 am and midnight



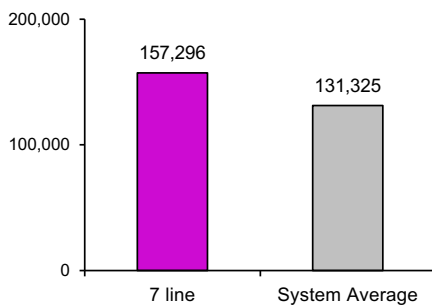
### The 7 is the cleanest in the system...

% of cars with 'light or no interior dirtiness' as  
defined by NYC Transit



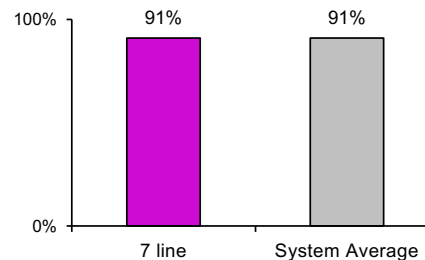
### but its cars break down less often than those on the average line.

miles traveled between delays caused by  
mechanical failures, 2015



### and performs average on in-car announcements.

% of cars with correct announcements as defined  
by NYC Transit



Questions about your line? Suggestions? Complaints? -- Call 511