

Straphangers Campaign

4 SUBWAY LINE PROFILE



Straphangers Campaign
MetroCard Rating **\$1.55**

The 4 line ranks 18th best of the 20 subway lines rated by the Straphangers Campaign. Our ranking is based on the MTA New York City Transit data below, using a method described at www.straphangers.org.

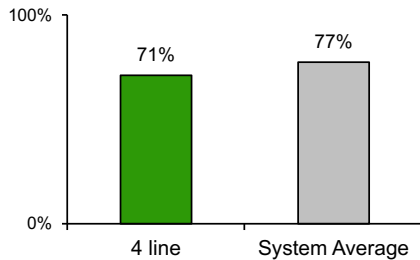
The 4 line is scheduled to come more often than most subway lines...

scheduled minutes between weekday trains
as of December 2015

| | AM Rush | Noon | PM Rush | Overnight |
|-----------------------|-------------|-------------|-------------|-----------|
| 4 line | 4:30 | 8 | 4:30 | 20 |
| System Average | 5:35 | 8:21 | 6:05 | 20 |

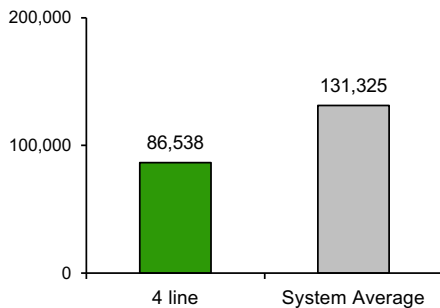
but arrives with below-average regularity.

% of trains arriving at regular intervals
--weekday "wait assessment"--
between 6 am and midnight



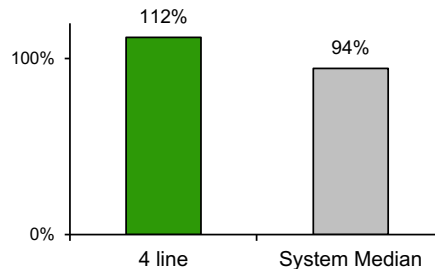
Cars on the 4 line break down more often than those on the average line.

miles traveled between delays caused by
mechanical failures, 2015



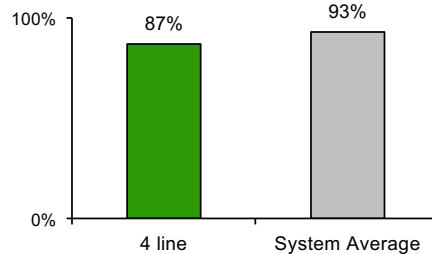
The 4 is the system's most crowded line.

% of maximum passenger guideline
at AM rush peak load point



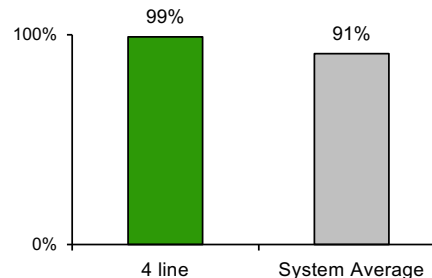
The 4 is less clean than average...

% of cars with 'light or no interior dirtiness' as
defined by NYC Transit



but performs nearly perfect on in-car announcements.

% of cars with correct announcements as defined
by NYC Transit



7
A
B
C
D
E
F
G
J
L
M
N
Q
R
V
W

Questions about your line? Suggestions? Complaints? -- Call 511