

Straphangers Campaign

2 SUBWAY LINE PROFILE



Straphangers Campaign MetroCard Rating \$1.65

The 2 line ranks tied for 14th best of the 20 subway lines rated by the Straphangers Campaign. Our ranking is based on the MTA New York City Transit data below, using a method described at www.straphangers.org.

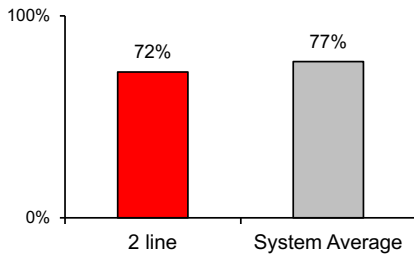
The 2 line has an average amount of scheduled service...

scheduled minutes between weekday trains
as of December 2015

| | AM Rush | Noon | PM Rush | Overnight |
|-----------------------|-------------|-------------|-------------|-----------|
| 2 line | 5:30 | 8 | 6:30 | 20 |
| System Average | 5:35 | 8:21 | 6:05 | 20 |

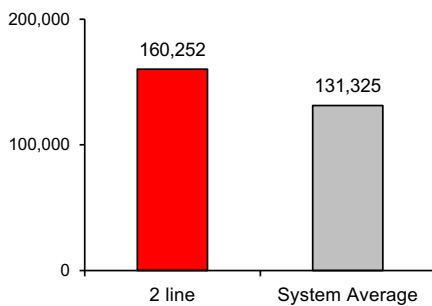
but arrives with regularity less often than the average line.

% of trains arriving at regular intervals
--weekday "wait assessment"--
between 6 am and midnight



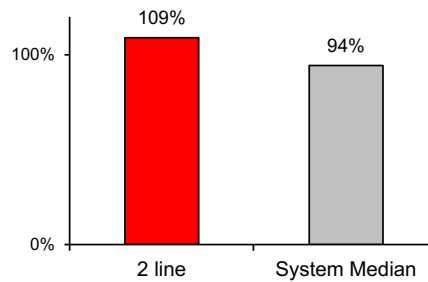
Cars on the 2 break down less often than those on the average line.

miles traveled between delays caused by
mechanical failures, 2015



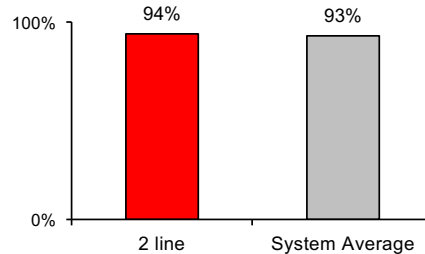
The 2 is a very crowded line.

% of maximum passenger guideline
at AM rush peak load point



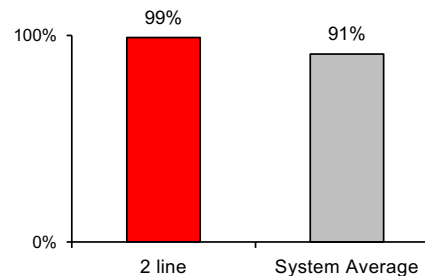
The 2 is about as clean as average...

% of cars with 'light or no interior dirtiness' as
defined by NYC Transit



and performs nearly perfect on in-car announcements.

% of cars with correct announcements as defined
by NYC Transit



7
A
B
C
D
E
F
G
J
L
M
N
Q
R
V
W

Questions about your line? Suggestions? Complaints? -- Call 511