

Straphangers Campaign

1 SUBWAY LINE PROFILE



Straphangers Campaign MetroCard Rating **\$2.05**

The 1 line ranks tied for best of the 20 subway lines rated by the Straphangers Campaign. Our ranking is based on the MTA New York City Transit data below, using a method described at www.straphangers.org.

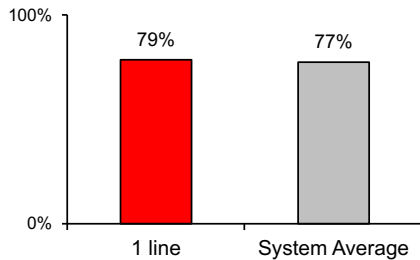
The 1 line is scheduled to come more often than most subway lines...

scheduled minutes between weekday trains as of December 2015

	AM Rush	Noon	PM Rush	Overnight
1 line	3:30	6	4	20
System Average	5:35	8:21	6:05	20

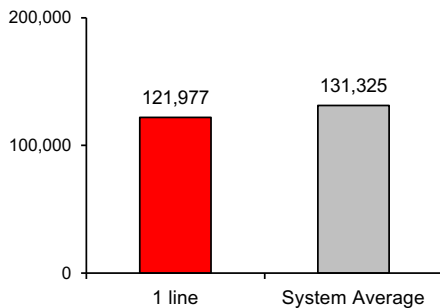
and arrives with above-average regularity.

% of trains arriving at regular intervals --weekday "wait assessment"-- between 6 am and midnight



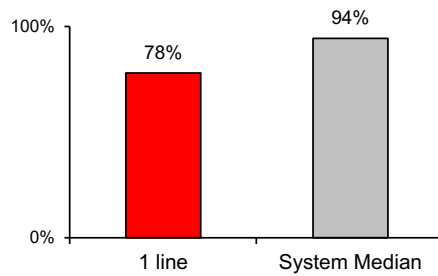
Cars on the 1 break down more often than those on the average line.

miles traveled between delays caused by mechanical failures, 2015



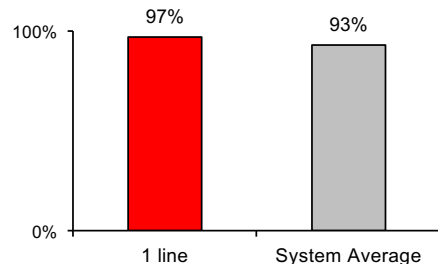
The 1 is less crowded than most lines.

% of maximum passenger guideline at AM rush peak load point



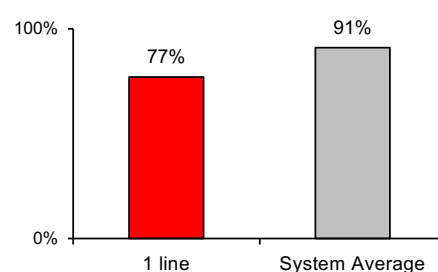
The 1 is cleaner than average...

% of cars with 'light or no interior dirtiness' as defined by NYC Transit



but performs worst on in-car announcements.

% of cars with correct announcements as defined by NYC Transit



7
A
B
C
D
E
F
G
J
L
M
N
Q
R
V
W

Questions about your line? Suggestions? Complaints? -- Call 511